



SOUTH FAYETTE SOCCER ASSOCIATION

• PRIDE • PASSION • COMMUNITY

FALL 2026 TRAVEL SEASON

TRAVEL UNIFORM PARENT GUIDE

Everything you need to order your player's new Under Armour kit – sizes, step-by-step instructions, and answers – in one place.



WHITE JERSEY – FRONT



WHITE JERSEY – BACK



GREEN JERSEY – FRONT



GREEN JERSEY – BACK



GREEN SHORTS



WHITE SOCKS

CREST DETAIL



\$150

Complete kit, per player

4

Items to order (1 of each)

Jun 20

Order deadline
(11:59 PM EDT)

Kits

Distributed by coaches
at the beginning of the
season



ALL SALES ARE FINAL

No changes, returns, or exchanges after ordering. Double-check sizes and the player's name before you pay.



ORDER ≠ REGISTER

Buying the kit doesn't register your player. You must also register for Travel at southfayettesoccer.org.

WHAT YOU'LL BUY

One of each – four items make the complete kit. Socks are required.

ITEM	PRICE
<input checked="" type="checkbox"/> Kelly Green jersey	\$49.95
<input type="checkbox"/> White jersey	\$49.95
<input checked="" type="checkbox"/> Kelly Green shorts	\$39.95
<input type="checkbox"/> White socks	\$10.00
Complete kit	\$149.85

Jerseys and shorts are under the **Uniform** menu; socks are under **Game Socks**.

PICK YOUR SIZE



START HERE

Most players order **Youth** sizes. Use the **quick-pick chart** below, or compare your player's best-fitting athletic shirt and shorts to the size charts. Choose **Women's** or **Men's** sizing only for older or taller players beyond youth sizes.

The charts below are exact Under Armour **garment** measurements (in inches), taken **laid flat** – so a waist or chest figure is about half the body circumference. For everyday sizing, the quick-pick chart is all most families need.

Between sizes? Size up. Especially for the jersey.

Don't size down. The kit is a relaxed "loose fit" on purpose – built for movement and a little growing room.

Youth fits most kids. Girls and boys alike – Women's/Men's sizing is just for players who've outgrown Youth XL.

QUICK-PICK CHART

YOUR PLAYER	JERSEY	SHORTS
Smaller / younger	Youth Small	Youth Small
Average youth	Youth Medium	Youth Medium
Taller / broader youth	Youth Large	Youth Large
Largest youth	Youth XL	Youth XL
Older / taller – needs adult cut	Adult Small +	Women's or Men's

Jersey and shorts are usually the same size – but it's fine to mix (e.g., a longer jersey with smaller shorts) for the best fit.

JERSEY SIZES

SIZE	FRONT LENGTH	CHEST WIDTH	BEST FOR
Youth Small	20 1/8"	14 1/4"	Smaller youth
Youth Medium	22 1/2"	15 1/2"	Average youth
Youth Large	24"	17"	Taller / broader youth
Youth XL	27"	18 1/2"	Largest youth
Adult Small	28 1/2"	19 1/2"	First adult step after Youth XL
Adult Medium	29"	21"	Larger teen / adult
Adult Large	29 1/2"	22 1/2"	Adult large
Adult XL / XXL	30 1/2–31 1/2"	24–25 1/2"	Adult XL and up

YOUTH SHORTS **MOST PLAYERS**

SIZE	RELAXED WAIST	EXTENDED WAIST	INSEAM <small>reference only</small>
Youth Small	11 1/2"	16"	5"
Youth Medium	12 1/2"	17"	5"
Youth Large	14"	18 1/2"	5"
Youth XL	15 1/2"	20"	5"

WOMEN'S SHORTS OLDER / TALLER PLAYERS

SIZE	RELAXED WAIST	EXTENDED WAIST	INSEAM <small>reference only</small>
Women's XS	13 1/4"	19 3/4"	4 1/2"
Women's Small	14 1/4"	20 3/4"	4 1/2"
Women's Medium	15 1/4"	21 3/4"	4 1/2"
Women's Large	16 3/4"	23 1/4"	4 1/2"
Women's XL	18 1/4"	24 3/4"	4 1/2"
Women's XXL / 3XL	19 3/4–21 1/4"	26 1/4–27 3/4"	4 1/2"

MEN'S SHORTS OLDER / TALLER PLAYERS

SIZE	RELAXED WAIST	EXTENDED WAIST	INSEAM <small>reference only</small>
Men's XS	12 1/2"	18 1/2"	7"
Men's Small	13 1/2"	19 1/2"	7"
Men's Medium	14 1/2"	20 1/2"	7"
Men's Large	16"	22"	7"
Men's XL	18"	24"	7"
Men's XXL+	20–24"	26–30"	7"

How to read the shorts charts: pick by **fit** (Youth, Women's, or Men's) and **waist**. Waist figures are the garment measured flat – roughly half the body circumference. The inseam is shown only so you know the length; you don't choose a size by inseam.

HOW TO ORDER

Six quick steps. The orange markers show exactly where to click.

1

Open the store

Go to the SFSA Travel Uniform Store. The home page lists every item, with the deadline at the top.

GO TO THE UNIFORM STORE →

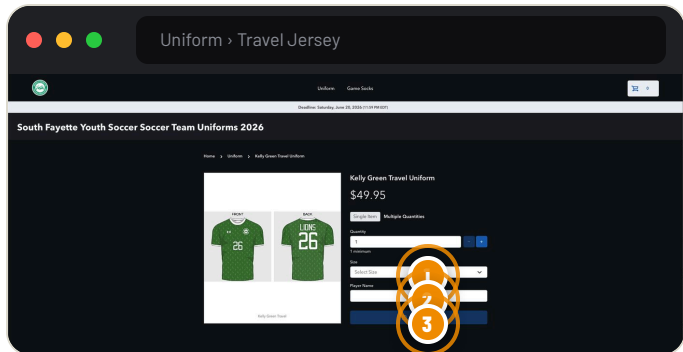
Direct link: sfsoccerfall26.itemorder.com/shop/home

2

Add both jerseys

You need a **green** and a **white** jersey. Order them one at a time – the screen looks the same for both.

- 1 Open a jersey, choose your **Size**, and type the player's **full name** (First Last).
- 2 Click **Add to Cart**.
- 3 Go back and repeat for the other color.



1 Choose **Size**

2 Type **Player Name**

3 Click **Add to Cart**

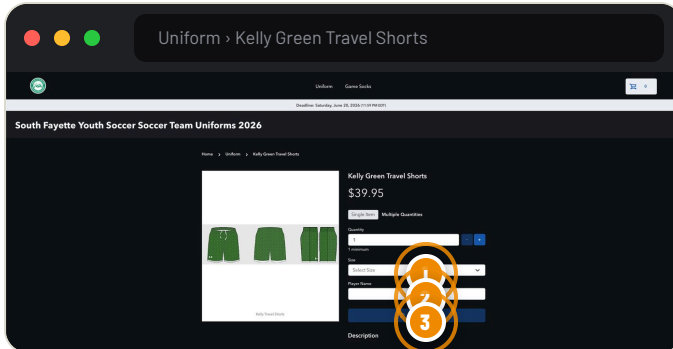
NOTE • Don't look for a number field – SFSA assigns jersey numbers.

3

Add the shorts

Open **Kelly Green Travel Shorts** and pick the right fit and size.

- 1 Open the **Size** menu and choose your **fit and size: Youth** for most players, or **Women's / Men's** for older or taller players.
- 2 Type the player's **full name** (First Last).
- 3 Click **Add to Cart**.



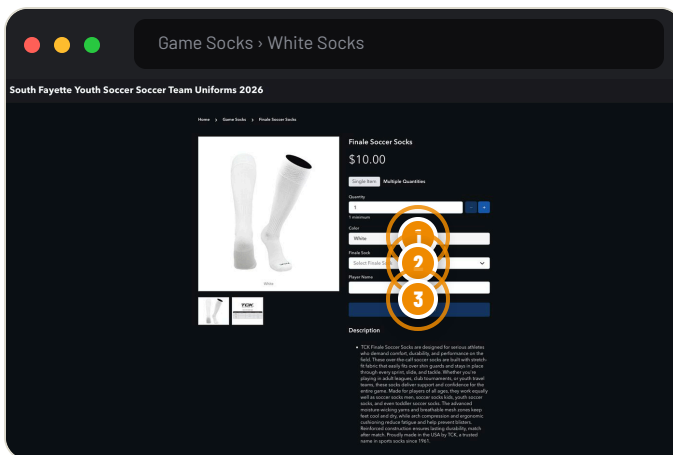
- 1 Choose **fit & Size**
- 2 Type **Player Name**
- 3 Click **Add to Cart**

4

Add the white socks

Under **Game Socks**, open the white socks. They're required for every game.

- 1 Confirm the color is **White**, then choose the sock **size**.
- 2 Type the player's **full name** and click **Add to Cart**.



- 1 Color = **White**
- 2 Choose **size**
- 3 Name & **Add to Cart**

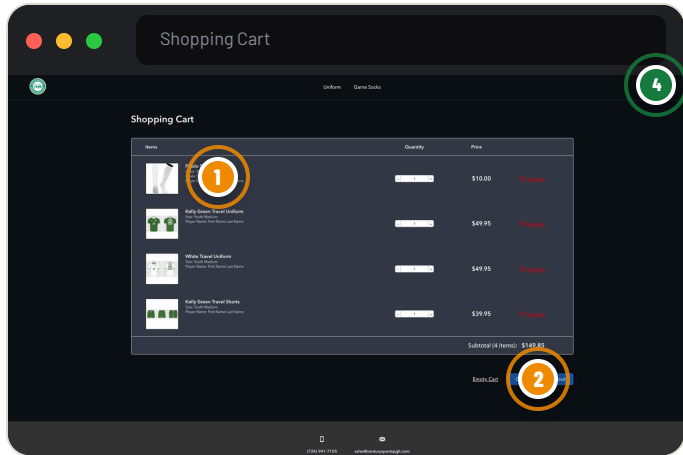
5

Check your cart

Click the **cart** (top-right). You should see **4 items** totaling **\$149.85**.

1 Confirm all four items and double-check every **size** and **name** – no changes after ordering.

2 Click **Continue to Checkout**.



1 Review **sizes & names**

2 Click **Continue to Checkout**

4 Cart should show **4**

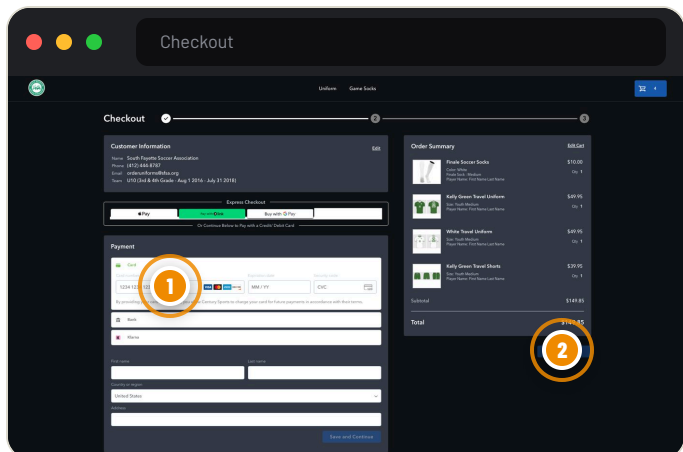
6

Pay and place your order

Enter your info and payment, then place the order. You can use Apple Pay / Google Pay or a card.

1 Fill in your details and **payment**.

2 Review the summary and click **Place Order**.



1 Enter **payment**

2 Click **Place Order**

ALL SET! • You'll get a confirmation. Your coach will hand out the uniforms at the **beginning of the season**.

COMMON QUESTIONS

ORDERING

? Why two jerseys, and do we need socks?

The kit includes both a **green** and a **white** jersey, so you'll order one of each — along with the **white socks**, which are required for every game.

? Can I pick my player's number?

No — **SFSA assigns numbers**. There's no number field when ordering.

? Ordering for more than one player?

Add a full set for each player and enter **each player's own name** before checking out.

? We have an older SFSA uniform — can we reuse it?

No. The kit was **redesigned for 2026**, so every Travel player needs the new one.

SIZING

? Should girls order Women's shorts / boys order Men's?

Not automatically. Most players — girls and boys — order **Youth**. Use Women's or Men's only for players beyond Youth XL.

? Shorts sizing note for girls

For girls ordering shorts, please **start with Youth sizing first**, as Youth sizes are expected to fit most players, regardless of gender. The Youth shorts have a **5" inseam** across all Youth sizes. **Women's shorts** are available for older or taller players who have outgrown Youth XL and have a slightly shorter **4 ½" inseam**. Families should choose shorts based on the player's **best overall fit at the waist and comfort level**, not by gender label alone. The inseam is provided as a reference for length, but the best sizing decision should be based on fit, movement, and the player's preference.

? Between sizes, or my child likes it tight?

Size up, and don't size down. The kit is meant to be a comfortable loose fit with room to grow.

? Do jersey and shorts have to match?

Usually they're the same size, but you can **mix sizes** for the best fit on each.

DATES & PICKUP

? When is the order due, and when do we get it?

Order by **June 20 (11:59 PM EDT)**. Your coach will **hand out the uniforms at the beginning of the season**.

? Will I have my jersey by the August 28 PLUM Tournament?

Yes – we believe we will receive the jerseys by **mid-August**. We'll communicate with every coach about when their first practice is and hand the kits out then, so players are ready for the tournament.

? Can my player try on a size first?

Yes – **optional try-ons the week of June 16**. Times and location will be shared once confirmed.

CHANGES & HELP

? Can I change or return after ordering?

No – **all orders are final**. Please review your cart carefully before paying.

? Wrong size, or need help?

Email SFSA at **southfayettesoccer@gmail.com** as soon as possible. For store/order issues, contact the vendor **Century Sports** at **(724) 941-7105** or **sales@centurysportspgh.com**.



South Fayette Soccer Association · southfayettesoccer.org · southfayettesoccer@gmail.com
Store: sfsoccerfall26.itemorder.com/shop/home · Support (Century Sports): (724) 941-7105
Have a great summer — see you on the pitch. · Pride. Passion. Community.